


SINGLE-POLE ELECTRODE FOR LATERAL
INSTALLATION FOR LEVEL MONITORING,
MECHAN. STABLE VERSION

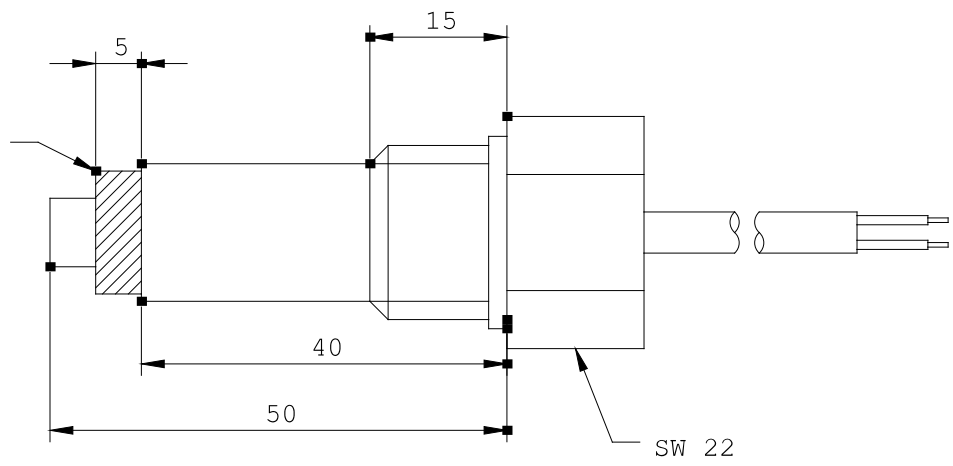


Product function	Probe for level monitoring	
Measuring circuit:		
Operating pressure / maximum	bar	10

Certificates/approvals:	
General Product Approval	other
 GOST	Declaration of Conformity

Further information:
Information- and Downloadcenter (Catalogs, Brochures,...) http://www.siemens.com/industrial-controls/catalogs
Industry Mall (Online ordering system) http://www.siemens.com/industrial-controls/mall
Cax online generator: http://www.siemens.com/cax
Service&Support (Manuals, Certificates, Characteristics, FAQs,...) http://support.automation.siemens.com/WWW/view/en/3UG3207-1C/all
Image database (product images, 2D dimension drawings, 3D models, device circuit diagrams, ...) http://www.automation.siemens.com/bilddb/cax_en.aspx?mlfb=3UG3207-1C

olierung



last change:

Feb 25,
2013